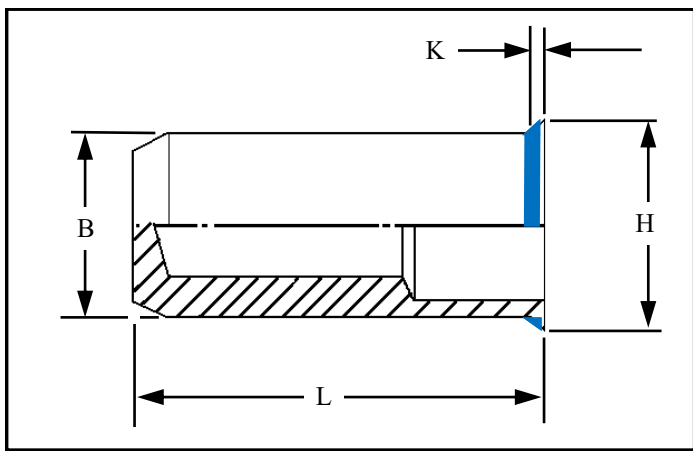




RIVETNUT TECHNOLOGY SYSTEMS LIMITED

RLCI-JR IN STAINLESS STEEL



Round low profile head closed ended Rivetnuts for material up to 3.50 mm thick
With Rimlex® under head

All dimensions in mm
Material :- Stainless steel (AISI 304)
Finish :- self colour

NOTE
The application of Rimlex® under the head may reduce the grip range.

R.T.S. SALES LINE
01296 330331

TECHNICAL DATA SHEET

THREAD SIZE	GRIP RANGE	HOLE SIZE -0.0 +0.10	BODY DIA "B" +0.10	HEAD DIA "H" ± 0.10	LENGTH "L"	"K"	PART NUMBER
M3	0.50 to 2.00	5.10	4.90	6.0	13.00	0.50	RLCI-03020-J
M4	0.50 to 2.50	6.10	5.90	7.0	16.00	0.50	RLCI-04025-J
M5	0.50 to 3.00	7.10	6.90	8.00	18.00	0.50	RLCI-05030-J
M6	0.50 to 3.00	9.10	8.90	10.00	21.00	0.50	RLCI-06030-J
M8	0.50 to 3.00	11.10	10.90	12.00	23.50	0.50	RLCI-08030-J
M10	1.00 to 3.50	13.10	12.90	14.20	26.50	0.80	RLCI-10035-J

The Rimlex® non-reactive seal is made of flexible organic based material, is applied under the head, it is resistant to many automotive oils, antifreeze and transmission fluids.

Colour	Blue
Hardness (ShoreA)	50 (approximately)
Sealing pressure:	> 150 bar
Shelf life on components	Indefinite
Re-usability:	Up to 10 times but is application dependent
Temperature range:	-40 to 150°C
Approved Specifications:	Ford Wss-M4G365-A1 Rover RES 22 FP05 Perkins PMS P.1.13 Eaton JCB Textron Fastening systems P1248
Cure time	30mins @ 160°C

For additional information and technical support please contact R.T.S. technical sales department. R.T.S. reserve the right to change specifications at any time. Information given is for guidance only and should not be used for specific design criteria without reference to our application engineers.