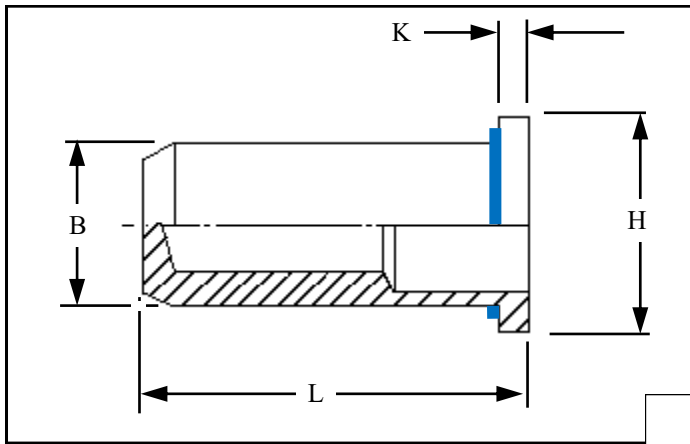




RIVETNUT TECHNOLOGY SYSTEMS LIMITED

RFCI-R IN STAINLESS STEEL



Round flat head closed ended Rivetnuts for material up to 7.50 mm thick with Rimlex® under head

All dimensions in mm
Material :- Stainless Steel (AISI 304)
Finish :- Self colour

NOTE
The application of Rimlex® under the head may reduce the grip range.

R.T.S. SALES LINE
01296 330331

TECHNICAL DATA SHEET

THREAD SIZE	GRIP RANGE	HOLE SIZE A/F -0.0 +0.10	BODY A/F "B"	HEAD DIA "H" ± 0.10	LENGTH "L"	"K"	PART NUMBER
M4	0.50 to 2.00	6.10	5.90	9.00	16.00	1.00	RFCI-04020-JR
M5	0.50 to 2.50 4.50 to 5.50 6.00 to 7.00	7.10	6.90	10.00	18.00 21.00 23.50	1.00	RFCI-05025-JR RFCI-05055-JR RFCI-05070-JR
M6	0.50 to 2.50 0.50 to 2.50 0.50 to 2.50 0.50 to 2.50	9.10	8.90	12.00 12.00 11.00 13.00	23.00	1.50	RFCI-06025-CD12R RFCI-06025-J12R RFCI-06025-CD11R RFCI-06025-CD13R
M8	0.50 to 2.50	11.10	10.90	15.00	23.50	1.50	RFCI-08025-JR
M10	1.00 to 3.00	13.10	12.90	17.00	26.50	2.00	RFCI-10030-JR

The Rimlex® non-reactive seal is made of flexible organic based material, is applied under the head, it is resistant to many automotive oils, antifreeze and transmission fluids.

Material	Polyurethane	Reusability	No
Colour	Blue	Bead form	Concave
Sealing capacity	> 150 bar	Cure method	Heat cure
Temperature range	-40 to 120 °C	Waterproof	IP67
Shore hardness	50 A range		

For additional information and technical support please contact R.T.S. technical sales department . R.T.S. reserve the right to change specifications at any time . Information given is for guidance only and should not be used for specific design criteria without reference to our application engineers.