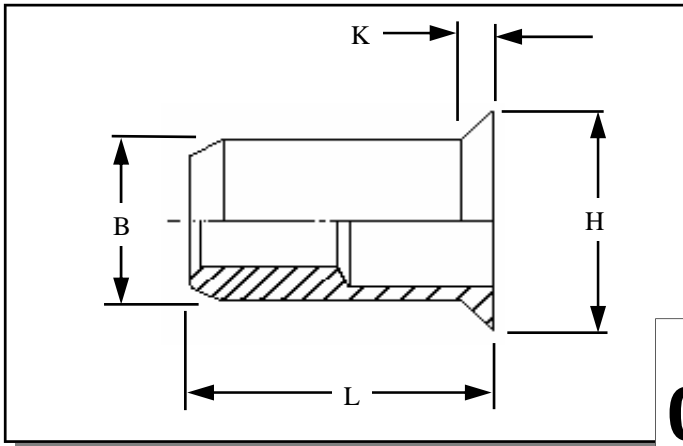




# RIVETNUT TECHNOLOGY SYSTEMS LIMITED

## RCOI IN STAINLESS STEEL



Round Countersunk head open ended Rivetnuts for material up to 11.00 mm thick

All dimensions in mm  
Material :- Stainless Steel (AISI 303)  
Finish :- Self colour

R.T.S. SALES LINE

**01296 330331**

TECHNICAL DATA SHEET

THREAD SIZE	GRIP RANGE	HOLE SIZE -0.0 +0.10	BODY DIA "B"	HEAD DIA "H" ± 0.10	LENGTH "L"	"K"	PART NUMBER
M3	1.10 to 1.70 1.10 to 2.30 2.30 to 3.00	5.10	5.00	6.80	7.30 7.90 8.50	1.00	RCOI-03017 RCOI-03023 RCOI-03030
M4	1.10 to 2.10 1.80 to 3.00 2.50 to 3.70	6.10	6.00	7.80	9.20 10.10 10.80	1.00	RCOI-04021 RCOI-04030 RCOI-04037
M5	1.10 to 2.50 1.10 to 3.50 3.00 to 4.50	7.10	7.00	8.80	10.60 11.60 12.60	1.00	RCOI-05025 RCOI-05035 RCOI-05045
M6	1.10 to 2.50 1.10 to 3.50 2.00 to 4.50 3.00 to 5.50	9.10	9.00	10.80	12.90 13.90 14.90 15.90	1.00	<a href="#">RCOI-06025</a> <a href="#">RCOI-06035</a> <a href="#">RCOI-06045</a> <a href="#">RCOI-06055</a>
M8	1.80 to 3.00 1.80 to 4.20 2.50 to 5.00 4.50 to 6.50	11.10	11.00	13.80	15.60 16.80 17.60 18.80	1.50	RCOI-08030 RCOI-08042 <a href="#">RCOI-08050</a> <a href="#">RCOI-08065</a>
M10	1.80 to 4.00 2.50 to 5.50 4.50 to 7.00	13.10	13.00	15.80	19.90 21.40 22.90	1.50	RCOI-10040 RCOI-10055 RCOI-10070
M12	2.50 to 4.20 2.50 to 6.00 4.00 to 7.60 7.00 to 9.20	16.10	16.00	19.80	23.50 25.30 26.80 28.40	2.00	RCOI-12042 RCOI-12060 RCOI-12076 RCOI-12092
M16	3.00 to 5.70 2.50 to 8.20 4.00 to 11.00	21.10	21.00	25.80	28.00 30.50 33.30	2.50	RCOI-16057 RCOI-16082 RCOI-16110

For additional information and technical support please contact R.T.S. technical sales department . R.T.S. reserve the right to change specifications at any time . Information given is for guidance only and should not be used for specific design criteria without reference to our application engineers.