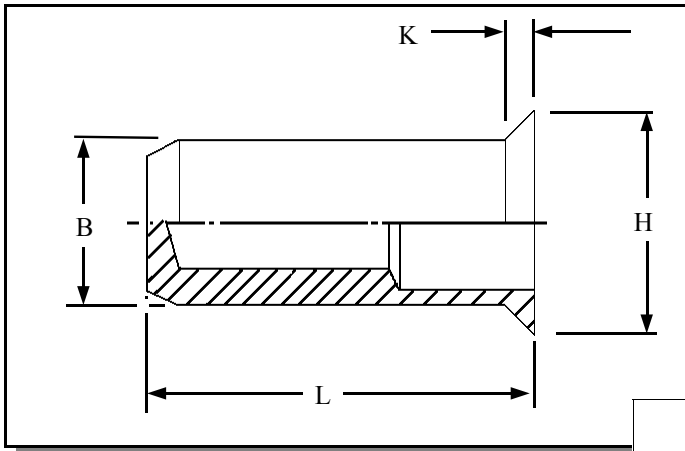




RIVETNUT TECHNOLOGY SYSTEMS LIMITED

RCCA IN ALUMINIUM



Round Countersunk head
closed ended Rivetnuts for
material up to
7.60 mm thick

All dimensions in mm
Material :- Aluminium
Finish :- self colour

R.T.S. SALES LINE

01296 330331

TECHNICAL DATA SHEET

THREAD SIZE	GRIP RANGE	HOLE SIZE -0.0 +0.10	BODY DIA "B"	HEAD DIA "H" ± 0.10	LENGTH "L"	"K"	PART NUMBER
M3	1.00 to 1.70 1.10 to 2.30 2.00 to 3.00	5.10	5.00	6.80	12.30 12.90 13.50	1.00	RCCA-03017 RCCA-03023 RCCA-03030
M4	1.00 to 2.10 1.30 to 2.90 2.50 to 3.70	6.10	6.00	7.80	15.90 16.70 17.50	1.00	RCCA-04021 RCCA-04029 RCCA-04037
M5	1.00 to 2.50 1.50 to 3.50 3.00 to 4.50	7.10	7.00	8.80	18.30 19.30 20.30	1.00	RCCA-05025 RCCA-05035 RCCA-05045
M6	1.00 to 2.50 1.50 to 3.50 2.50 to 4.50 4.00 to 5.50	9.10	9.00	10.80	22.30 23.30 24.30 25.30	1.00	RCCA-06025 RCCA-06035 RCCA-06045 RCCA-06055
M8	1.50 to 3.00 1.80 to 4.20 3.00 to 5.40 5.00 to 6.60	11.10	11.00	13.80	25.20 26.40 27.60 28.80	1.50	RCCA-08030 RCCA-08042 RCCA-08054 RCCA-08066
M10	1.50 to 3.70 2.00 to 5.20 5.00 to 6.80	13.10	13.00	15.80	32.90 34.40 35.90	1.50	RCCA-10037 RCCA-10052 RCCA-10068
M12	2.00 to 4.20 4.00 to 7.60	16.10	16.00	19.80	36.10 39.70	2.00	RCCA-12042 RCCA-12076

For additional information and technical support please contact R.T.S. technical sales department . R.T.S. reserve the right to change specifications at any time . Information given is for guidance only and should not be used for specific design criteria without reference to our application engineers.