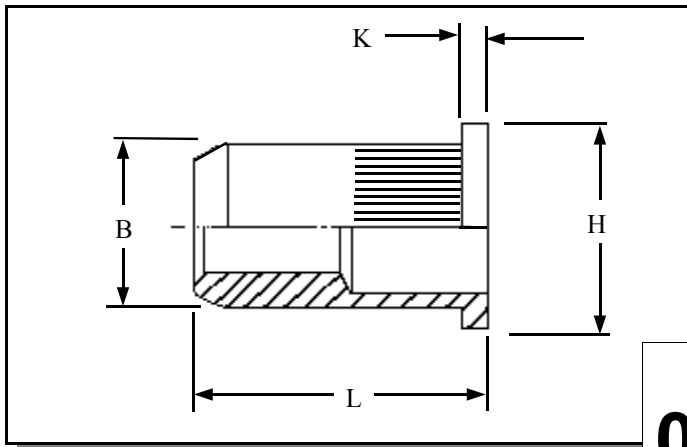


RIVETNUT TECHNOLOGY SYSTEMS LIMITED

KFOI IN STAINLESS STEEL



Knurled flat head open ended Rivetnuts for material up to 7.60 mm thick

All dimensions in mm
Material :- Stainless Steel (AISI 303)
Finish :- self colour

R.T.S. SALES LINE

01296 330331

TECHNICAL DATA SHEET

THREAD SIZE	GRIP RANGE	HOLE SIZE -0.0 +0.10	BODY DIA "B"	HEAD DIA "H" ± 0.10	LENGTH "L"	"K"	PART NUMBER
M3	0.50 to 1.10 0.50 to 1.70 1.10 to 2.30 1.80 to 3.00	5.10	5.00	7.00	7.40 8.00 8.60 9.20	0.80	KFOI-03011 KFOI-03017 KFOI-03023 KFOI-03030
M4	0.50 to 1.30 0.50 to 2.10 1.30 to 3.00 2.00 to 3.70	6.10	6.00	8.00	9.10 9.90 10.70 11.50	0.80	KFOI-04013 KFOI-04021 KFOI-04030 KFOI-04037
M5	0.50 to 1.50 0.50 to 2.50 1.50 to 3.50 2.50 to 4.50	7.10	7.00	9.00	10.50 11.50 12.50 13.50	1.00	KFOI-05015 KFOI-05025 KFOI-05035 KFOI-05045
M6	0e.50 to 1.50 0.50 to 2.50 1.50 to 3.50 2.50 to 4.50 3.50 to 5.50	9.10	9.00	11.00	13.00 14.00 15.00 16.20 17.20	1.20	KFOI-06015 KFOI-06025 KFOI-06035 KFOI-06045 KFOI-06055
M8	0.50 to 1.80 0.50 to 3.00 1.80 to 4.20 1.80 to 5.00 3.50 to 6.60	11.10	11.00	14.00	15.40 16.60 17.80 18.80 20.30	1.50	KFOI-08018 KFOI-08030 KFOI-08042 KFOI-08050 KFOI-08066
M10	0.50 to 2.20 0.50 to 3.70 2.20 to 5.50 3.50 to 6.80	13.10	13.00	16.00	19.80 21.30 22.80 24.30	1.50	KFOI-10022 KFOI-10037 KFOI-10055 KFOI-10068
M12	0.50 to 4.20 2.50 to 5.90 5.90 to 7.60	16.10	16.00	20.00	22.30 25.00 27.70	1.70	KFOI-12042 KFOI-12059 KFOI-12076

For additional information and technical support please contact R.T.S. technical sales department . R.T.S. reserve the right to change specifications at any time . Information given is for guidance only and should not be used for specific design criteria without reference to our application engineers.