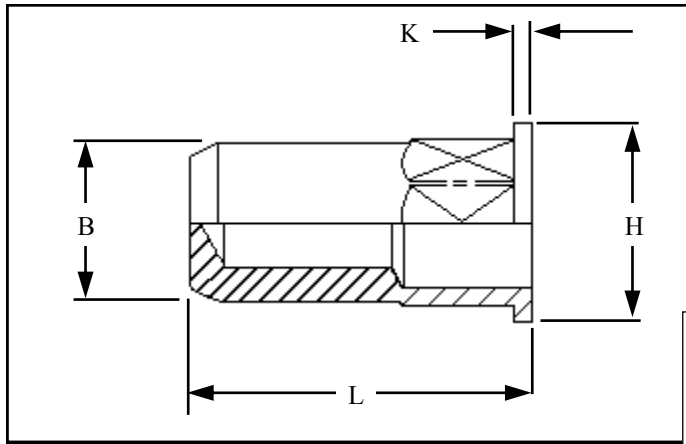




RIVETNUT TECHNOLOGY SYSTEMS LIMITED

HFCS IN MILD STEEL



Hexagon flat head closed ended Rivetnuts for material up to 7.60 mm thick

All dimensions in mm
Material :- Mild Steel
Finish :- Zinc Plated Cr3 RoHS compliant

R.T.S. SALES LINE
01296 330331

TECHNICAL DATA SHEET

THREAD SIZE	GRIP RANGE	HOLE SIZE -0.0 +0.10	BODY DIA "B"	HEAD DIA "H" ± 0.10	LENGTH "L"	"K"	PART NUMBER
M3	0.50 to 1.10	5.10	5.00	7.00	12.40	0.80	HFCS-03011
	0.50 to 1.70				13.00		HFCS-03017
	1.10 to 2.30				13.60		HFCS-03023
	2.30 to 3.00				14.20		HFCS-03030
M4	0.50 to 1.30	6.10	6.00	8.00	15.80	0.80	HFCS-04013
	0.50 to 2.10				16.60		HFCS-04021
	1.30 to 3.00				17.40		HFCS-04030
	3.00 to 3.70				18.20		HFCS-04037
M5	0.50 to 1.50	7.10	7.00	9.00	18.20	1.00	HFCS-05015
	0.50 to 2.50				19.20		HFCS-05025
	1.50 to 3.50				20.20		HFCS-05035
	3.50 to 4.50				21.20		HFCS-05045
M6	0.50 to 1.50	9.10	9.00	11.00	22.40	1.20	HFCS-06015
	0.50 to 2.50				23.40		HRCS-06025
	1.50 to 3.50				24.40		HFCS-06035
	2.50 to 4.50				25.40		HFCS-06045
	4.50 to 5.50				26.40		HFCS-06055
M8	0.50 to 1.80	11.10	11.00	14.00	25.40	1.50	HFCS-08018
	0.50 to 3.00				26.60		HFCS-08030
	1.80 to 4.20				27.80		HFCS-08042
	1.80 to 5.00				29.00		HFCS-08050
	5.00 to 6.60				30.20		HFCS-08066
M10	0.50 to 2.20	13.10	13.00	16.00	32.80	1.50	HFCS-10022
	0.50 to 3.70				34.30		HFCS-10037
	2.20 to 5.50				35.80		HFCS-10055
	5.50 to 6.80				37.90		HFCS-10068
M12	0.50 to 2.50	16.10	16.00	20.00	35.90	1.70	HFCS-12025
	0.50 to 4.20				37.70		HFCS-12042
	2.50 to 5.90				39.50		HFCS-12059
	5.90 to 7.60				41.30		HFCS-12076

For additional information and technical support please contact R.T.S. technical sales department . R.T.S. reserve the right to change specifications at any time . Information given is for guidance only and should not be used for specific design criteria without reference to our application engineers.