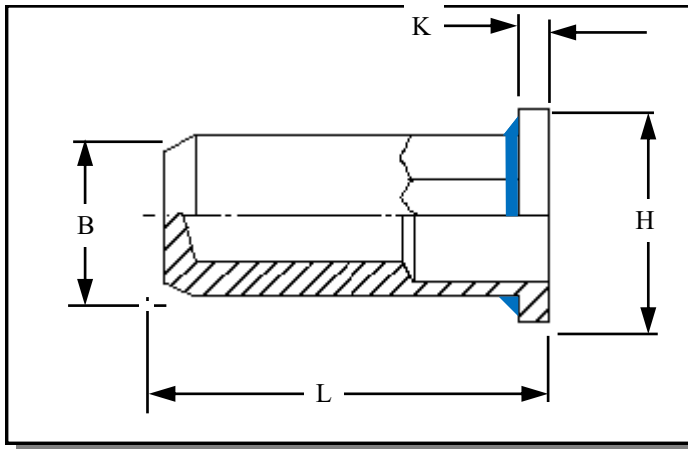




RIVETNUT TECHNOLOGY SYSTEMS LIMITED

HFCI-CD316R IN STAINLESS STEEL with RIMLEX®



Hexagon flat head closed ended Rivetnuts with Rimlex® seal for material up to 4.50 mm thick

All dimensions in mm
 Material :- 316 Stainless Steel
 Contains >2% Molybden
 Finish :- Self colour
 With Rimlex® Seal See below *

NOTE
 The application of Rimlex® under the head may reduce the grip range.

R.T.S. SALES LINE
01296 330331

TECHNICAL DATA SHEET

THREAD SIZE	GRIP RANGE	HOLE SIZE A/F -0.0 +0.10	BODY A/F "B"	HEAD DIA "H" ± 0.10	LENGTH "L"	"K"	PART NUMBER
M4	0.50 to 1.50	6.10	6.00	9.00	15.00	1.00	HFCI-04015-CD316R
M5	0.50 to 2.00	7.10	7.00	10.00	17.50	1.00	HFCI-05020-CD316R
M6	0.50 to 2.00	9.10	9.00	12.00	21.50	1.50	HFCI-06020-CD316R
	3.00 to 4.00				23.50		HFCI-06040-CD316R
M8	0.50 to 2.00	11.10	11.00	15.00	23.50	1.50	HFCI-08020-CD316R
	3.00 to 4.50				26.00		HFCI-08045-CD316R

The Rimlex® non-reactive seal is made of flexible organic based material, is applied under the head, it is resistant to many automotive oils, antifreeze and transmission fluids.

Colour	Blue
Hardness (ShoreA)	50 (approximately)
Sealing pressure:	> 150 bar
Shelf life on components	Indefinite
Re-usability:	Up to 10 times but is application dependent
Temperature range:	-40 to 150°C
Approved Specifications:	Ford Wss-M4G365-A1 Rover RES 22 FP05 Perkins PMS P.1.13 Eaton JCB Textron Fastening systems P1248
Cure time	30mins @ 160°C

For additional information and technical support please contact R.T.S. technical sales department . R.T.S. reserve the right to change specifications at any time . Information given is for guidance only and should not be used for specific design criteria without reference to our application engineers.